

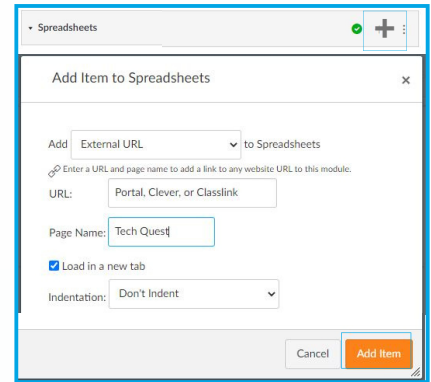
Canvas

Give students access to Tech Quest by adding an external link.

This process can be applied at the Admin Account level, Sub-Account level, or the Course level.

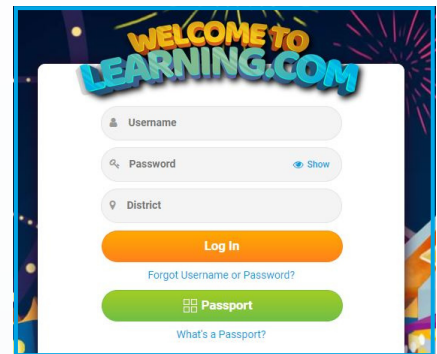
To Create an External Link:

- In Course Navigation, click **Modules**
- Click the **Add Item +** button
- Select **External URL**
- Enter your **Portal, Clever, Classlink, or login.learning.com URL**
- Enter a **Page Name** (e.g. *Tech Quest*)
- Check the **Load New Tab** box
- Click the **Add Item** button




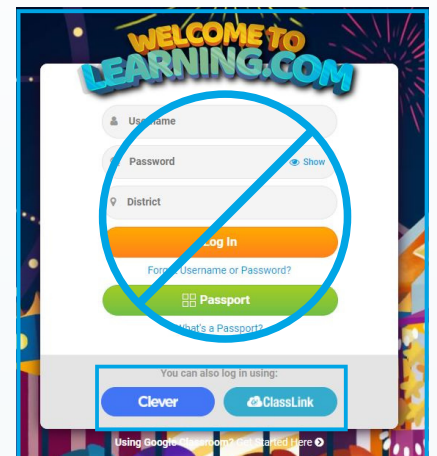
Student Login Directions

- Click the External URL item in the Module
- Click the 'Open Tech Quest in a new window' button
- Enter Learning.com login credentials
- Click Log In button



Using Clever or ClassLink?

- Students will click the Clever or ClassLink button on the login page if you choose to link to <https://login.learning.com>
- Students will click the Learning.com icon  then, the Clever or ClassLink button if you choose to link the External URL to your district portal or Clever/Classlink page.
- Note: in some districts clicking the Learning.com icon will automatically bring students to the Tech Quest map.



ABOUT LEARNING.COM

Learning.com's digital literacy curriculum enables schools to develop students' technology skills throughout core instruction.

Canvas

Give students access to Tech Quest from Course Navigation.

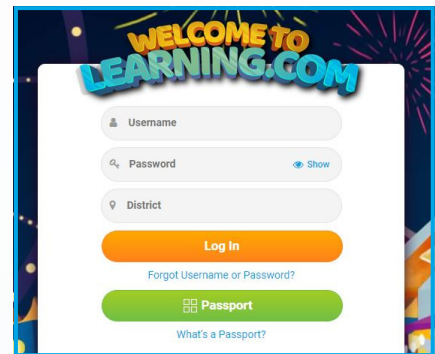
Create a link with the Redirect Tool:

- In Course Navigation, click **Settings**
- Click the Apps tab
- Search for Redirect Tool
- Click **+ Add App** button
- Enter a Name (e.g. Tech Quest)
- Enter your **Portal, Clever, Classlink, or login.learning.com URL**
- Check the **Show in Course Navigation** box
- Click the **Add App** button


A screenshot of the Canvas Redirect Tool configuration form. The form has a 'Name' field containing 'Tech Quest'. Below it is a 'URL Redirect' field containing 'https://login.learning.com'. There are four checkboxes: 'Force open in new tab (For External Links Only)' (checked), 'Show in Course Navigation' (checked), 'Show in Account Navigation' (unchecked), and 'Show in User Navigation' (unchecked). At the bottom right are 'Close' and 'Add App' buttons.

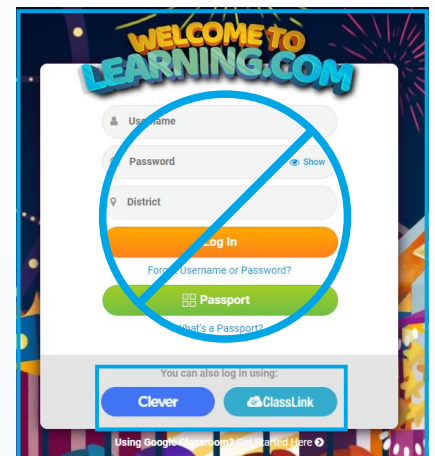
Student Login Directions

- Click the Tech Quest link in Course Navigation
- Click the 'Open Tech Quest in a new window' button
- Enter Learning.com login credentials
- Click Log In button



Using Clever or ClassLink?

- Students will click the Clever or ClassLink button on the login page if you choose to link to <https://login.learning.com>
- Students will click the Learning.com icon  then, the Clever or ClassLink button if you choose to link the External URL to your district portal or Clever/Classlink page.
- Note: in some districts clicking the Learning.com icon will automatically bring students to the Tech Quest map.



ABOUT LEARNING.COM

Learning.com's digital literacy curriculum enables schools to develop students' technology skills throughout core instruction.